

26/12 Hazelwood Close Suffolk Park NSW

3 2 2

A fresh sanctuary of designer style, space and privacy, this modern two-level townhouse embraces easycare coastal living with a great layout for entertaining. Positioned in the relaxed 'Forest Glades' community amid leafy bush surrounds, the light filled home delivers a great low maintenance property with quality finishes, spacious proportions and a tranquil lifestyle location. From its peaceful setting there is a boardwalk through the rainforest and it is short strolling distance to the beach, shops and the lake.

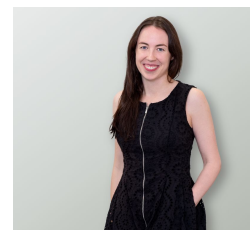
- A flowing open plan layout with good separation of living spaces
- Contemporary kitchen with s/steel fittings and breakfast

[For full version visit the website](https://www.byronbaypropertyvalues.com.au)

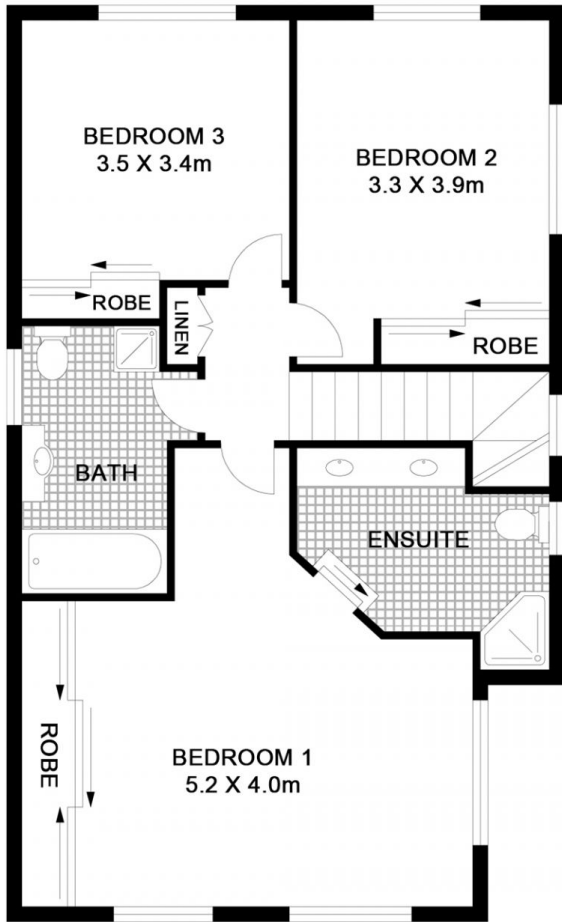
Type : House
Price : \$ 875,000
Building Size : 268.5 sqm
View : <https://www.byronbaypropertyvalues.com.au/sale/nsw/northern-rivers/suffolk-park/residential/house/7146275>



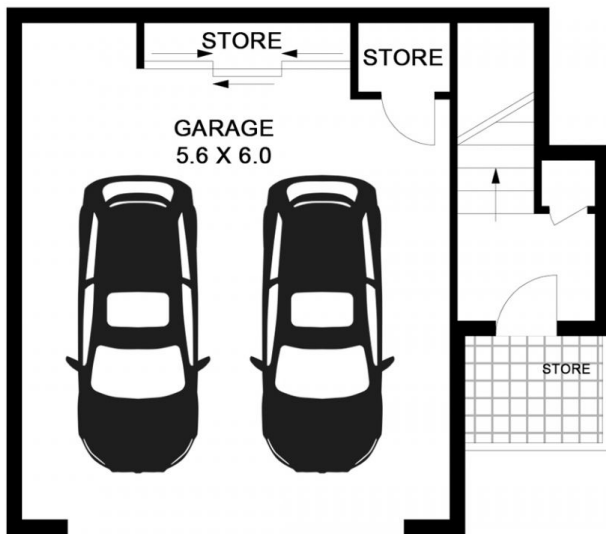
Braden Walters
0411 637 373



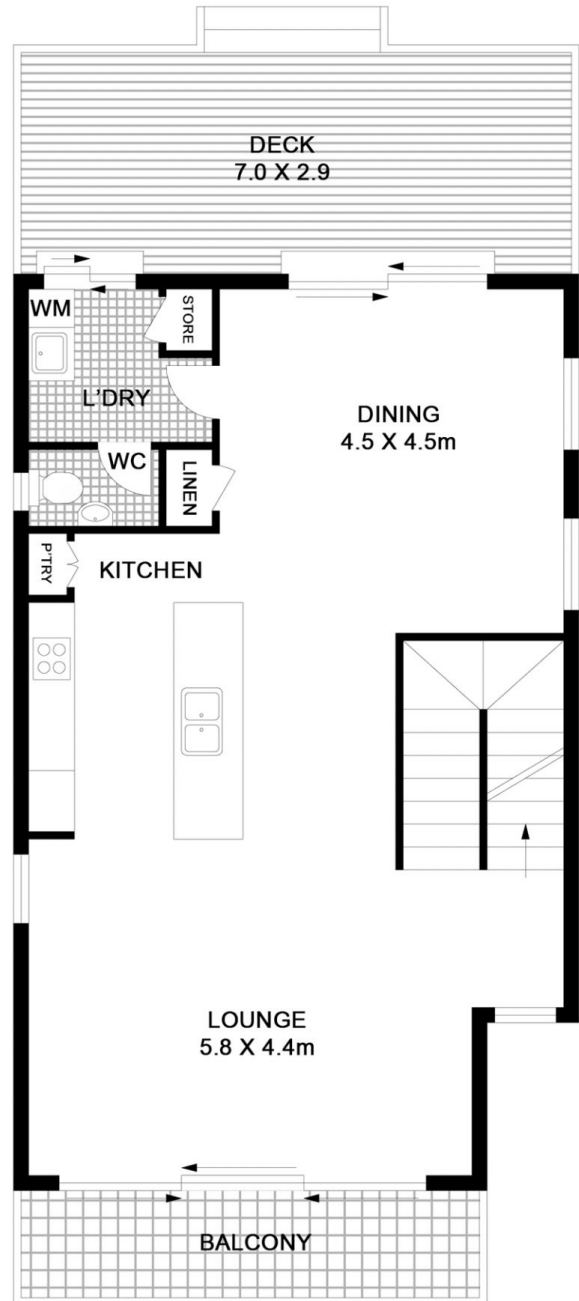
Eve Kelly
0266874447



UPPER LEVEL



LOWER LEVEL



MIDDLE LEVEL

26/12 HAZELWOOD CLOSE SUFFOLK PARK

Floor Plan Disclaimer: Media Drive (MD) floor plans / site plans are intended as an approximate guide only. No representations or warranties of any nature are given or intended and any person using this information other than as a guide should always rely on their own enquiries. Media Drive property marketing services / 0413979054 / Photography, Floor plans, Video, Aerial photography / www.mediadrive.com.au



Internal: 200m²