



20A Killarney Crescent Skennars Head NSW

4 2 2

Showcasing quality, space and a boldly contemporary design, this dual-level residence captivates with its striking architectural presence in an exclusive pocket of Skennars Head. It has been expertly crafted to provide a spacious sanctuary of exceptional style with its flowing proportions, relaxed resort-like environment and sought-after beachside location that's within walking distance to the waterfront and Sharpes Beach, and just a few minutes to Lennox village.

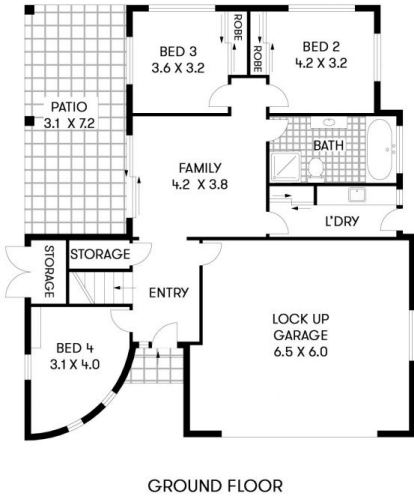
Flowing layout featuring a spacious open design on the first level
 Large north facing terrace plus a covered patio and level grassed garden
 Generous downstairs bedrooms plus a bathroom and

[For full version visit the website](https://www.byronbaypropertyvalues.com.au)

Type : House
Price : \$ 1,270,000
Building Size : 277 sqm
View : <https://www.byronbaypropertyvalues.com.au/sale/nsw/northern-rivers/skennars-head/residential/house/7146314>



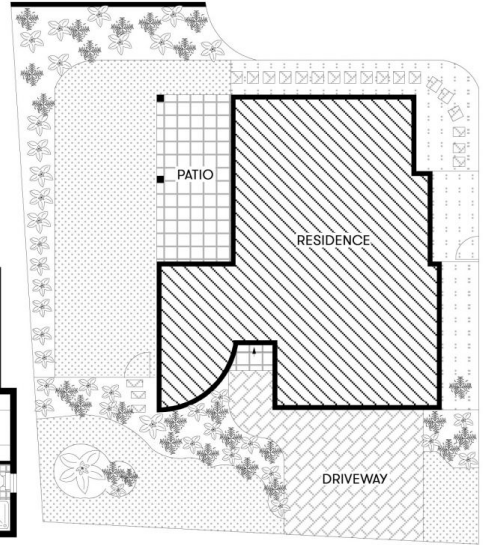
Braden Walters
 0411 637 373



GROUND FLOOR



FIRST FLOOR



SITE PLAN
(NOT TO SCALE)

20A Killarney Crescent

SKENNARS HEAD

Floor Plan Disclaimer: Media Drive (MD) floor plans / site plans are intended as an approximate guide only. No representations or warranties of any nature are given or intended and any person using this information other than as a guide should always rely on their own enquiries. Media Drive property marketing services / 0413973554 / Photography, Floor plans, Video, Aerial photography / www.mediadrive.com.au



APPROXIMATE AREAS

INTERNAL FLOOR SPACE - 227m²

EXTERNAL FLOOR SPACE - 48m²

GARAGE - 40m²