



19 Palm-Lily Crescent Bangalow NSW

3 2 2

Displaying a fresh contemporary design that perfectly complements its traditional appeal, this striking character home now offers a stylish and spacious retreat that's perfect for the modern family. It features a bright interior layout with many smart new updates and a focus on low maintenance living and entertaining. When it comes to convenience and lifestyle you can't go past this great location that's a short drive to Bangalow's shops, cafes and primary school, and just 15 minutes to Byron Bay and beaches.

- Cleverly modernised and finished with high attention to quality and detail
- Designed to provide a great home for easy indoor-outdoor

[For full version visit the website](https://www.byronbaypropertyvalues.com.au)

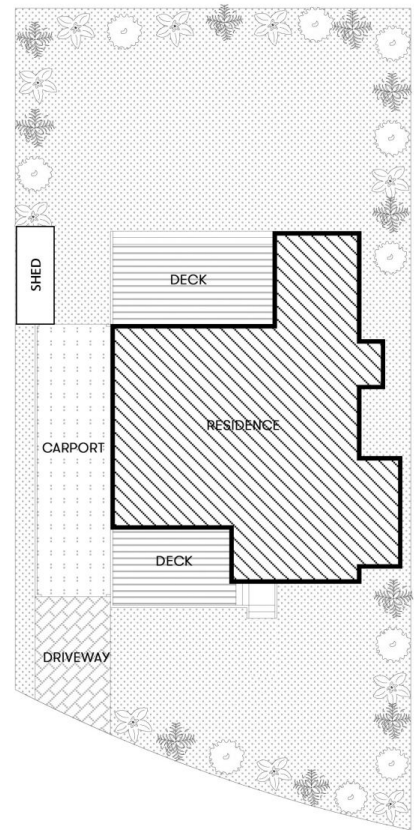
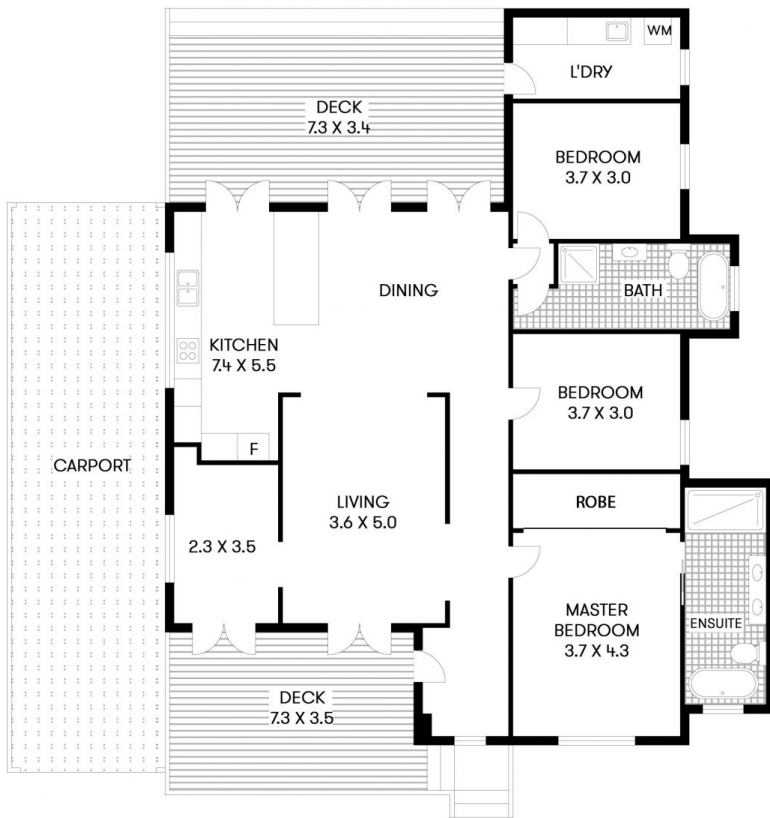
Type : House

Price : \$ 1,675,000

View : <https://www.byronbaypropertyvalues.com.au/sale/nsw/northern-rivers/bangalow/residential/house/7146338>



Braden Walters
0411 637 373



19 PALM-LILY CRESCENT BANGALOW

Floor Plan Disclaimer: Media Drive (MD) floor plans / site plans are intended as an approximate guide only.
No representations or warranties of any nature are given or intended and any person using this information other than
as a guide should always rely on their own enquiries Media Drive property marketing services / 0415973554 / Photography,
Floor plans, Video, Aerial photography / www.mediadrive.com.au



APPROXIMATE AREAS

INTERNAL FLOOR SPACE - 130m²

EXTERNAL FLOOR SPACE - 51m²

GARAGE - 42m²