



26b Alcorn Street Suffolk Park NSW

4 🛏 2 🚿 3 🚗

Blurring the design line between beach house and treehouse, this family-sized haven, positioned against a natural bushland reserve, offers a slice of Suffolk Park's seaside paradise, just a few sandy footsteps from the stunning stretches of Tallow Beach.

Set on one of the area's most secluded streets, a sense of privacy and serenity flows into every corner of this multi-level home with leafy vistas and ocean breezes filling the space through louvered windows that capture every aspect of this stunning beachside address.

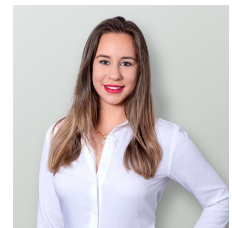
The upper ground-floor entry level features a central open-plan kitchen, dining, and living area, with a

[For full version visit the website](https://www.byronbaypropertyvalues.com.au)

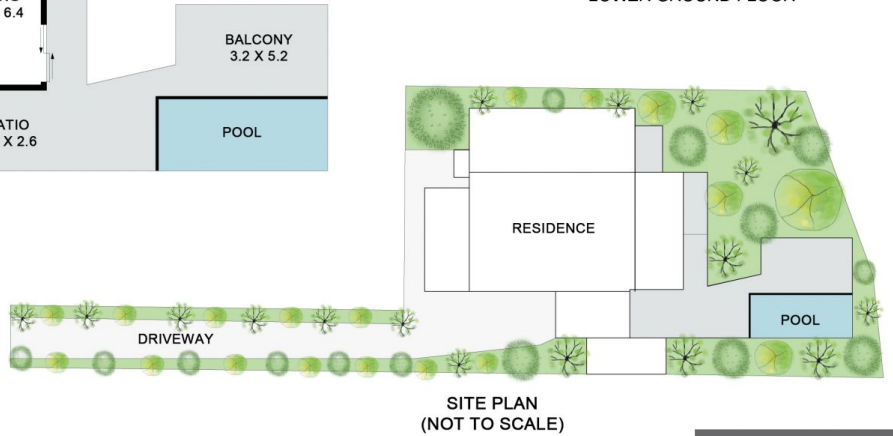
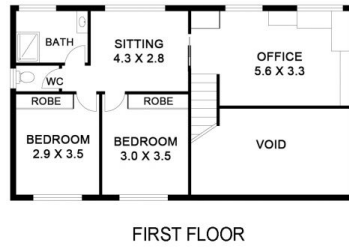
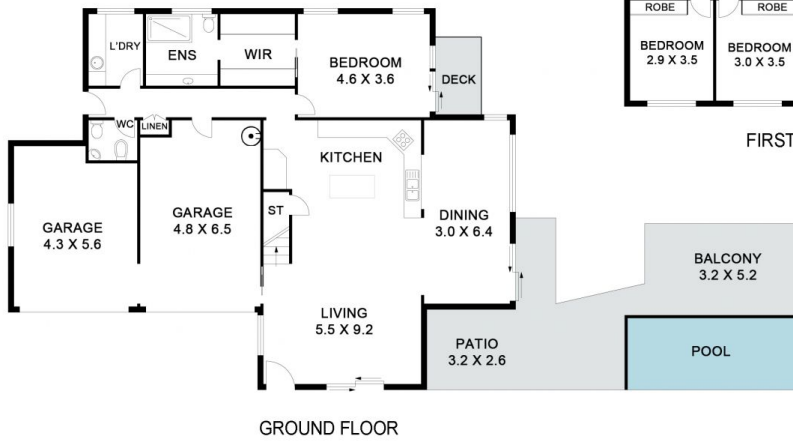
Type : House
Land Size : 770 sqm
View : <https://www.byronbaypropertyvalues.com.au/sale/nsw/northern-rivers/suffolk-park/residential/house/7146388>



Ben Forsyth
0410 065 222



Jacqui McAuliffe
0409 756 759



26b Alcorn Street

Suffolk Park

Floor Plan Disclaimer: Media Drive (MD) floor plans / site plans are intended as an approximate guide only. No representations or warranties of any nature are given or intended and any person using this information other than as a guide should always rely on their own enquiries. Media Drive property marketing services / 0413973054 / Photography, Floor plans, Video, Aerial photography / www.mediadrive.com.au



APPROXIMATE AREAS	
INTERNAL FLOOR SPACE	- 304m ²
EXTERNAL FLOOR SPACE	- 50m ²
GARAGE	- 50m ²