



## 23 Shelley Drive Byron Bay NSW

4 3 2

Flaunting all the charms of a quintessential Byron Bay home, this peaceful retreat has been tastefully transformed into a stylish and smart oasis.

The main hub of the house reveals the open-plan living and kitchen areas, surrounded by glass bi-fold doors that open out to an all-embracing balcony, making way for indoor-outdoor living. This together with three bedrooms; including the master featuring an ensuite, private large patio, and small deck with a divine outdoor bathtub, as well as two others sharing a common bathroom.

Offering great potential for additional income with the freestanding one-bedroom studio that comes complete with

[For full version visit the website](https://www.byronbaypropertyvalues.com.au)

**Type** : House

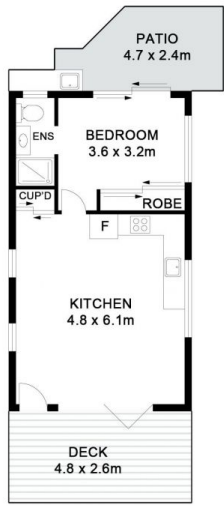
**View** : <https://www.byronbaypropertyvalues.com.au/sale/nsw/northern-rivers/byron-bay/residential/house/7146503>



**Braden Walters**  
0411 637 373



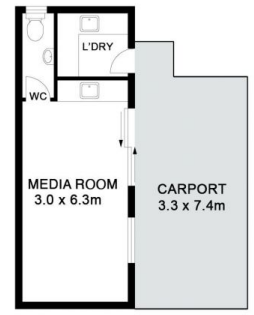
**Adam Jones**  
0438 928 083



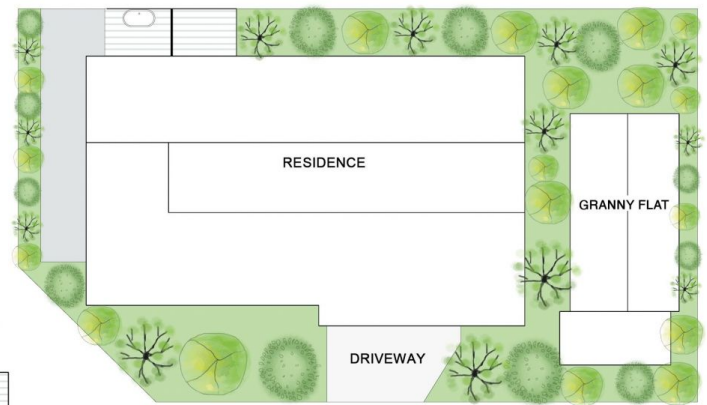
ONE BEDROOM  
GRANNY FLAT



UPPER GROUND FLOOR



LOWER GROUND FLOOR



SITE PLAN  
(NOT TO SCALE)

23 Shelley Drive

Byron Bay

Floor Plan Disclaimer: Media Drive (MD) floor plans / site plans are intended as an approximate guide only.  
No representations or warranties of any nature are given or intended and any person using this information other than  
as a guide should always rely on their own enquiries Media Drive property marketing services / 0415973554 / Photography,  
Floor plans, Video, Aerial photography / www.mediadrive.com.au

4 3 2



APPROXIMATE AREAS	
INTERNAL FLOOR SPACE	- 164m <sup>2</sup>
EXTERNAL FLOOR SPACE	- 154m <sup>2</sup>
GARAGE	- 22m <sup>2</sup>