



2/10 Megan Crescent Lennox Head NSW

3 🛏 2 🚿 2 🚗

Ideal for holiday home seekers, downsizers, or families alike; this brand new, off-the-plan, townhouse, is located in a highly sought-after, downtown Lennox Head locale.

The perfect match for those desiring an idyllic beachside lifestyle, the single-level home, in a boutique set of six, features an open-plan kitchen, living, and dining area, extending out to the covered alfresco entertaining space. This together with three bedrooms, all with built-ins, including a generous main bedroom that comprises a walk-in and ensuite.

Due for completion in early 2023, the chance to select your finishes means you can truly make it your own. Soon, the

[For full version visit the website](https://www.byronbaypropertyvalues.com.au)

Type : Townhouse
Land Size : 228 sqm
View : <https://www.byronbaypropertyvalues.com.au/sale/nsw/northern-rivers/lennox-head/residential/townhouse/7146515>



Braden Walters
0411 637 373



Yonika Davis
02 6687 4447



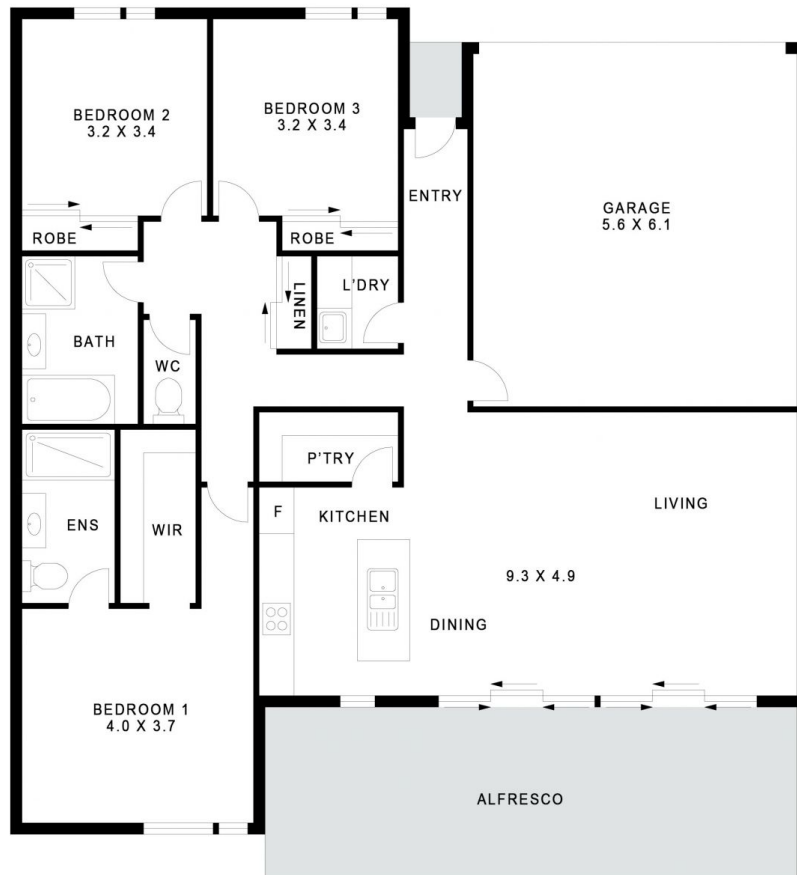
GROUND FLOOR

2/10 Megan Crescent Lennox Head

Floor Plan Disclaimer: Media Drive (MD) floor plans / site plans are intended as an approximate guide only. No representations or warranties of any nature are given or intended and any person using this information other than as a guide should always rely on their own enquiries. Media Drive property marketing services / 0413979554 / Photography, Floor plans, Video, Aerial photography / www.mediadrive.com.au



APPROXIMATE AREAS	
INTERNAL FLOOR SPACE	- 126m ²
EXTERNAL FLOOR SPACE	- 28m ²
GARAGE	- 34m ²



GROUND FLOOR

2/10 Megan Crescent Lennox Head

Floor Plan Disclaimer: Media Drive (MD) floor plans / site plans are intended as an approximate guide only. No representations or warranties of any nature are given or intended and any person using this information other than as a guide should always rely on their own enquiries. Media Drive property marketing services / 0413979554 / Photography, Floor plans, Video, Aerial photography / www.mediadrive.com.au



APPROXIMATE AREAS	
INTERNAL FLOOR SPACE	- 126m ²
EXTERNAL FLOOR SPACE	- 28m ²
GARAGE	- 34m ²