



## 28 Valley Drive Alstonville NSW

5 3 2

Why choose between making a sea-change or a tree-change, when you can set your eyes on a wonderful property that blissfully offers both.

Located on the Alstonville plateau, 'Brundah' is a character-filled home that has easy access to the beaches of Ballina, Lennox Head, and Byron Bay. Meanwhile, nestled on its own ample, half-acre block, luscious gardens gently slope away into a rainforest reserve, complete with a babbling brook at the base of the valley.

All the while, the brick and tile house itself is uniquely designed, featuring vaulted ceilings, exposed timber beams, and a split-level floor plan. Central to the home is

[For full version visit the website](https://www.byronbaypropertyvalues.com.au/sale/nsw/northern-rivers/alstonville/residential/house/7146519)

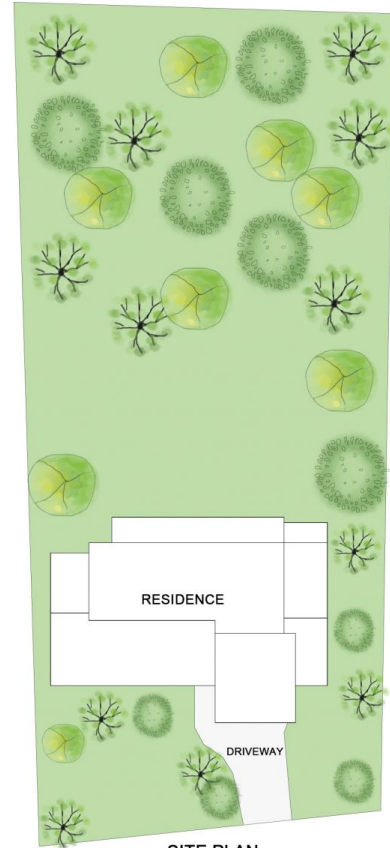
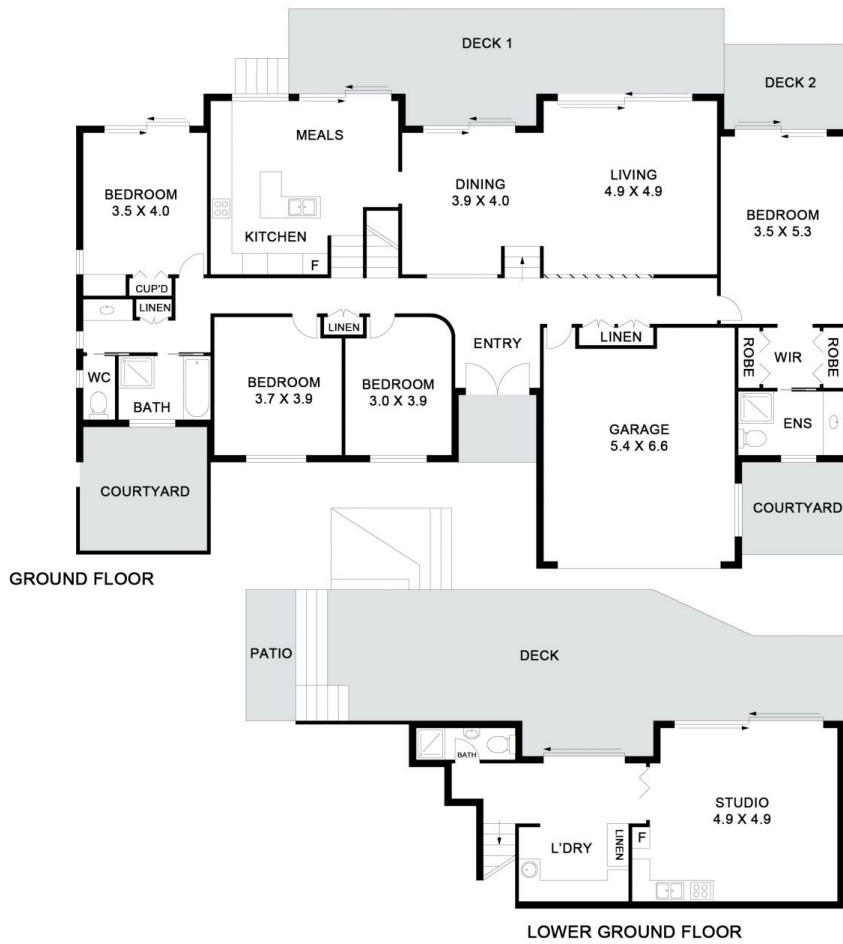
**Type** : House  
**Price** : \$ 1,235,000  
**Land Size** : 1961 sqm  
**View** : <https://www.byronbaypropertyvalues.com.au/sale/nsw/northern-rivers/alstonville/residential/house/7146519>



**Yonika Davis**  
02 6687 4447



**Braden Walters**  
0411 637 373



28 Valley Dr

Alstonville

Floor Plan Disclaimer: Media Drive (MD) floor plans / site plans are intended as an approximate guide only.  
No representations or warranties of any nature are given or intended and any person using this information other than  
as a guide should always rely on their own enquiries Media Drive property marketing services / 0415973554 / Photography,  
Floor plans, Video, Aerial photography / www.mediadrive.com.au

4 3 2

**APPROXIMATE AREAS**

INTERNAL FLOOR SPACE - 259m<sup>2</sup>

EXTERNAL FLOOR SPACE - 123m<sup>2</sup>

GARAGE - 34m<sup>2</sup>