



2/16 Teak Circuit Suffolk Park NSW

3 1 1

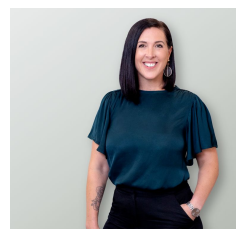
Tucked away in a peaceful pocket of the seaside paradise of Suffolk Park, this freestanding, single-level family villa offers the ultimate carefree and low-maintenance coastal living.

Nestled against a lush bushland reserve and set back from the street, a sense of privacy and serenity fills the home, from the quaint front patio and courtyard to the light-infused living areas.

Well-proportioned for family living or those seeking to downsize, three generous bedrooms are spread throughout the home, each with built-in robes and all served by a central bathroom and separate water closet.

[For full version visit the website](https://www.byronbaypropertyvalues.com.au/sale/nsw/northern-rivers/suffolk-park/residential/house/7146531)

Type : House
Land Size : 362 sqm
View : <https://www.byronbaypropertyvalues.com.au/sale/nsw/northern-rivers/suffolk-park/residential/house/7146531>



Yonika Davis
02 6687 4447



Braden Walters
0411 637 373



2/16 TEAK COURT SUFFOLK PARK

Floor Plan Disclaimer: Media Drive (MD) floor plans / site plans are intended as an approximate guide only. No representations or warranties of any nature are given or intended and any person using this information other than as a guide should always rely on their own enquiries. Media Drive property marketing services / 0415973554 / Photography, Floor plans, Video, Aerial photography / www.mediadrive.com.au



APPROXIMATE AREAS

INTERNAL FLOOR SPACE - 124m²

EXTERNAL FLOOR SPACE - 45m²

GARAGE - 18m²