



## 41 Hutley Drive Lennox Head NSW

4 2 2

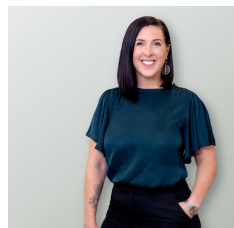
Possessing all the ideal qualities of a family home within a seaside locale, this four-bedroom residence presents in a way that enhances indoor-outdoor living, perfectly suited to its enviable coastal climate and lifestyle.

The home's single-level layout reveals spacious, sunny, and stylish interiors, with an oversized living room adjoining the open-plan kitchen, dining, and meals area. This zone extends to the large covered alfresco patio, overlooking the expansive backyard bordered by tropical palm trees, with level lawns, an inground swimming pool, and garden beds.

There's plenty of space for the entire family to rest easy, with four bedrooms thoughtfully placed throughout, all with

[For full version visit the website](https://www.byronbaypropertyvalues.com.au)

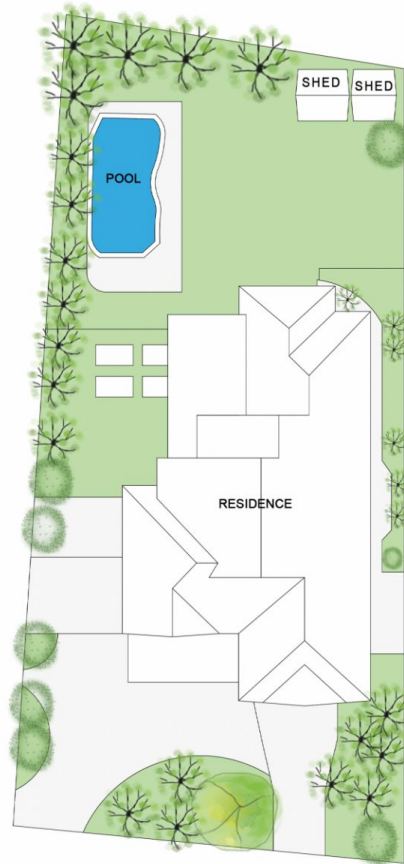
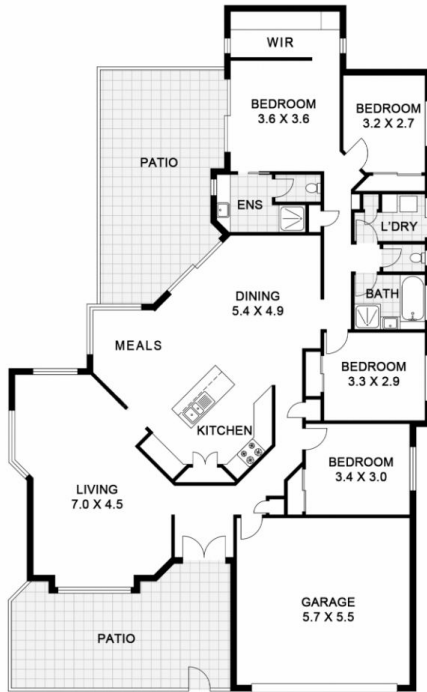
<b>Type</b>	: House
<b>Price</b>	: \$ 1,412,000
<b>Building Size</b>	: 173 sqm
<b>Land Size</b>	: 918 sqm
<b>View</b>	: <a href="https://www.byronbaypropertyvalues.com.au/sale/nsw/northern-rivers/lennox-head/residential/house/7308958">https://www.byronbaypropertyvalues.com.au/sale/nsw/northern-rivers/lennox-head/residential/house/7308958</a>



Yonika Davis



Braden Walters



SITE PLAN  
(NOT TO SCALE)

## 41 Hutley Drive, Lennox Head

**Floor Plan Disclaimer:** Media Drive (MD) floor plans / site plans are intended as an approximate guide only. No representations or warranties of any nature are given or intended and any person using this information other than as a guide should always rely on their own enquiries. Media Drive property marketing services / 0413879054 / Photography, Floor plans, Video, Aerial photography / [www.mediadrive.com.au](http://www.mediadrive.com.au)



APPROXIMATE AREAS	
INTERNAL FLOOR SPACE -	157m <sup>2</sup>
EXTERNAL FLOOR SPACE -	53m <sup>2</sup>
GARAGE -	31m <sup>2</sup>