



## 92 Phillips Road Newrybar NSW

5 🛏 3 🚿 2 🚗

This character filled renovated Queenslander, privately situated on a quiet cul de sac, offers some of the most romantic hinterland and ocean views in the Byron Bay area.

'Glenfernie Farm' is a delightful blend of charming country life with all the modern conveniences.

Expertly and beautifully renovated throughout, the home has been thoughtfully and tastefully enhanced with additional accommodation and facilities to offer a generous and well-appointed lifestyle.

'Glenfernie Farm' features beautifully polished timber floors,

[For full version visit the website](https://www.byronbaypropertyvalues.com.au)

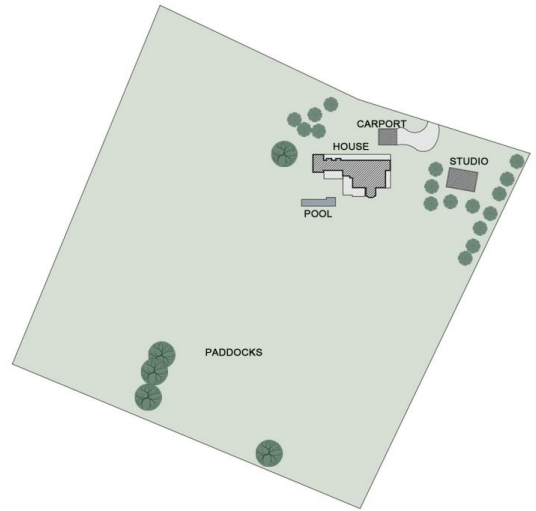
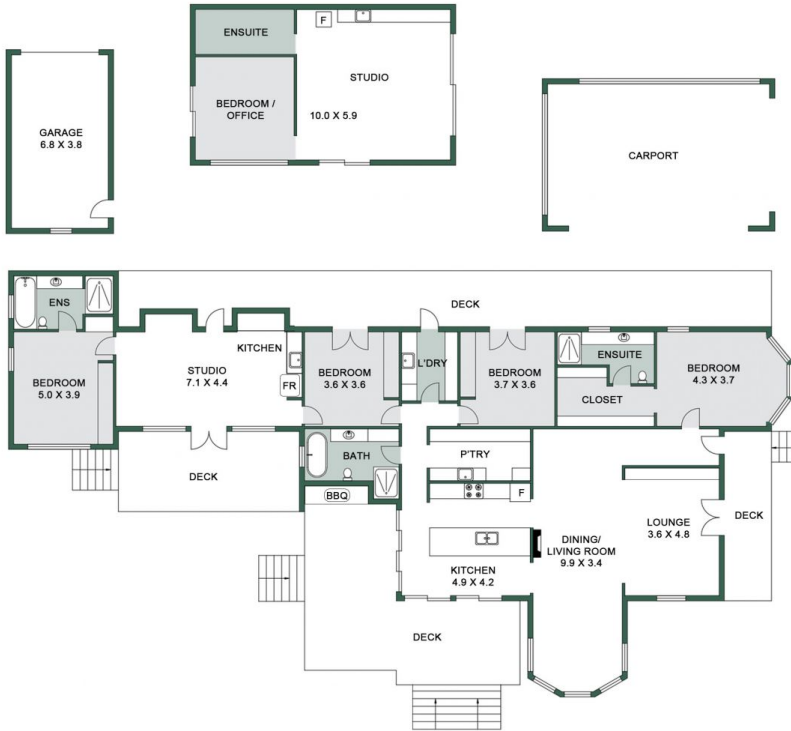
**Type** : House  
**Land Size** : 2.02 ha  
**View** : <https://www.byronbaypropertyvalues.com.au/sale/nsw/northern-rivers/newrybar/residential/house/7963483>



**Braden Walters**  
0411 637 373



**Harry McKinnon**  
66874447



Site Plan

92 Phillips Road, Newrybar

Floor Plan Disclaimer: Media Drive (MD) floor plans / site plans are intended as an approximate guide only. No representations or warranties of any nature are given or intended and any person using this information other than as a guide should always rely on their own enquiries. Media Drive property marketing services / 0413973554 / Photography, Floor plans, Video, Aerial photography / www.mediadrive.com.au



APPROXIMATE AREAS	
INTERNAL FLOOR SPACE	- 277m <sup>2</sup>
EXTERNAL FLOOR SPACE	- 120m <sup>2</sup>
GARAGE	- 26m <sup>2</sup>